

**NEW
FEATURES**

How Clean is Your Air? Find Out with the AIR-AIDE™

Model AA-3500 Airborne Particulate Monitor

- ✦ *Smaller Lighter Case Design with Air Flow Meter*
- ✦ *Improved Performance and Stability for IAQ*
- ✦ *Longer Battery Life – 10hr NiMH Battery*
- ✦ *Universal AC Plug Adapter 110 & 220VAC*
- ✦ *Optional Wireless Data Transmission & Storage*
- ✦ *New PC Software for Creative Graphical Reports*



Picture shown with optional Wireless Modular Antenna

Select Features

- Direct Reading with high resolutions and stability of Airborne Particulates
- Active sample flow using a long-life air sampling pump for particle size separation
- Location codes; user-defined audible alarm;
- Size selective inlet, PM-10, PM-2.5, PM-1.0 and ISO Respirable (4.0µm)
- Rechargeable battery - Unit runs on AC or DC power
- Large data storage capacity – can run continuously for 15 months without downloading
- On-screen programming of sampling and data storage parameters
- Downloading of stored data through an RS232 port. PC-based software supplied to download and graph stored data
- Selection of different built-in calibration factors for fine and coarse particulate matter
- CE, ETL approved
- Optional Wireless Data Transmission to computer
- Interfaces to wireless Video Dust Monitoring System Model VDM-7500

Description

Air-Aide Model AA-3500 Airborne Particulate Monitor provides accurate and instantaneous display of concentration readings on lung damaging particulates and aerosols. AA-3500 is a portable handheld survey tool for measuring lung damaging particulate matter. The unique sensor design has applications in indoor air quality (IAQ), HVAC, environmental and industrial hygiene. Results are immediately displayed and stored in memory. The supplied PC software allows for graphical and statistical representation of the total dust generating process, eliminating the need for repetitive and costly filter gravimetric laboratory analysis.

Applications

...For exposure monitoring of all dusts & aerosols

- Lead
 - Welding Fume
 - Silica
 - Coal
 - Wood/Paper
 - Concrete/Cement
 - Cadmium
 - Nuisance Dusts
 - Chromate
 - Toxic soil remediation
 - Tobacco smoke
 - Construction Dusts
 - Dry Chemical
 - Oil mists
 - Grinding Dusts
 - Pharmaceuticals
 - Paint Spray
- ✓ Pre-determination of air quality for ventilations system design
 - ✓ Survey of work place for compliance and related health reasons
 - ✓ Monitoring indoor air quality in factories, offices or homes for respirable particulates.
 - ✓ Indoor Air Quality Investigations for “Green Buildings”



Specifications

Standard System Configuration

- Air-Aide Model AA-3500 Airborne Particle Monitor
- Universal Transformers for 120 and 220/230 VAC.
- Includes flow audit meter and adapter
- Adjustment tool for flow rate
- Downloading and analysis software for XP
- 9-to-9-pin RS232 cable for downloading data to a PC.

Hardware Features

- Ambient-resolution light scattering sensor.
- Liquid crystal display (LCD).
- Long-life brush less pump
- Unit's handle swivels for ergonomic use.
- High capacity NiMH rechargeable battery.

Resolution, Stability and Operating Range

- Resolution: 0.001 mg/m³.
- Stability at constant temperature (2 sigma): ±0.004 mg/m³
- Temperature stability (2 sigma): ±0.0025 mg/m³/°C.
- Operating Range: 0.001 to 20.0 mg/m³ or 0.01 to 200 mg/m³ (Optional)
- Analog Output 0-2VDC

AA-3500 Software Features

- On-screen programming of sampling and data storage/averaging parameters.
- Computation of time-weighted average, as well as minimum and maximum values (date and time stamped) by location code.
- Selection of built-in factors for fine and coarse particulate matter.
- Up to 99 location codes to tag data.
- User-definable audible alarm.

Optional Wireless Transmitter



Interchangeable Size Selective Impactors



AA-3500 Kit Comes Complete with:
Battery Charger, Computer Cable & DustComm Pro Software, Flow Meter & Adjustment tool, Impactor Sleeve, & Instruction Manual

Ergonomic Cases Design with Swivel Handle



Universal Interchangeable Battery Charger

Calibration

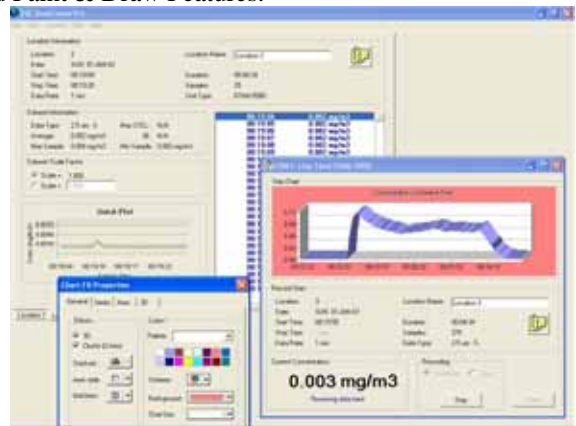
- Gravimetric Reference NIST Traceable – SAE Fine Test Dust ISO 12103-1 Standard

Data Display, Storage and Averaging

- Data display rate: 1 sec (3-second time constant).
- Capacity of 21,600 data points, date and time stamped.
- User-selectable data storage/averaging intervals:
 - Short term: 2, 4 and 10 sec.
 - Long term: 1, 10 and 30 min.

PC-Based DustComm Pro Software

- RS232 cable provided for convenient downloading of stored data.
- Windows-based software graphs values and computes statistics by location code. Data can be standardized based upon filter-based measurements. Files stored in comma-delimited, spreadsheet-compatible format with time, date, location code and Paint & Draw Features.



Power Requirements and Battery

- The unit operates under battery or AC power continuously
- Unit provided with universal transformers for 120 and 220/240 VAC.
- 10-hour standard battery lifetime during sampling (on full charge).
- Power consumption at 2 l/min: 350 mA.
- 6 VDC NiMH rechargeable battery with 3.6 A-hour storage capacity.

Dimensions and Weight

- AA-3500 Monitor: 3"H x 6"W x 9"D
- Weight: 5 lb

Options

- Zero Filter
- Calibration Span Reference insert
- Size selective impactor: PM-10, PM-2.5, PM-1.0 and ISO Respirable (4.0µm)



Environmental Devices Corporation

4 Wilder Drive Bldg. 15 • Plaistow, NH 03865

Phone: (603) 378-2112 • Fax: (603) 378-2113

Website: www.hazdust.com • E-mail: customerservice@hazdust.com

ISO 9002

