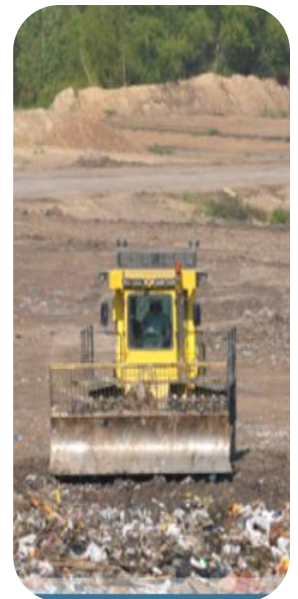


How Clean Is Your Air?
Find out with HAZ-DUST Model
EPAM-7500



Direct Reading Particulate Monitor and Air Station

The EPAM-7500 is a light weight, affordable and portable PM and Weather station.




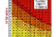



The EPAM-7500 can monitor PM 2-.5, PM-10, PM-4.0 and PM-1.0. The EPAM-7500 is light weight, weighing only 7 pounds and can be easily mounted to a tripod.

The EPAM-7500 offers an easy to use, touch screen and data can be transmitted through RS232, USB Type A & B, Ethernet Port or SD Card.

Optional Accessories include:

- Wireless connectivity
- Solar Panel
- Wind Speed & Direction
- Remote Sensing Probe
- PM Inlet Heaters for Ultra Sonic Met Station
- GPS
- Heat Index
- Barometric Pressure

KEY FEATURES

-  **Wind Speed**
-  **Wind Direction**
-  **Barometric Pressure**
-  **Heat Index**
-  **GPS**
-  **Water Proof**
-  **No Moving Parts**

Small light-weight and compact!

Applications Include:

- Dust generation Monitoring
- Hot Spot Location and Identification
- Hazardous Waste Site and Fenceline monitoring
- Urban air quality studies
- Indoor air quality investigations.

Contact Us

Contact Environmental Devices Corporation for more details, or if you would like to receive a quote. Email sales: sales@hazdust.com or call 1- (800) 234-2359 or call direct at 1 (603) 378-2112 ext 20

EPAM-7500 Specifications

Model: EPAM-7500

Ultrasonic Wind Speed & Direction

Haz-Dust model: EPAM-7500 Specifications:

Display and Option: Graphical Color Touch Screen Display

Calibration: Gravimetric reference NIST Traceable-SAE fine test dust-ISO12103-1

Accuracy: +/- 10% to filter SAE fine test dust

Concentration/Sensing Range: .001-400mg/m³

Particle Size: .1-100um

Size Selective Ranges: .1-100um (TSP) PM-1.0, PM-2.5, PM-10

Precision: +/-003mg/m³ (3ug/m³)

Sampling Flow Rate: Temperature compensated 2.0 liters/minute (Adjustable)

Gravimetric Filter Cassette: 47mm EPA FRM Style.

Audible Alarm Output: Internal 90db @ 3 Ft. pulsed audible alarm user threshold selectable. Optional external audible (90db @ 9 Ft.) and visual (strobe) alarm.

Recording Time: 1 sec. to 24 months

Sampling Rate: 1 sec., 5 sec., 10 sec., 1 min., 15 min., 30 min., 60 min.

Data Storage: 75,000 data points

Memory & Time Storage: > 5 years

Real-time Clock & Data Display: hours, min., sec., day, month, year, USA/Euro User Configuration

Graphical Data Display: Concentration in mg/m³ & TWA, MAX, MIN, STEL, Date, Time, Temperature & RH

Relative Humidity Sensor: Range: 5-100 %

Temperature Sensor: Range: -4 to 140 Degree F (-20 to 60 Degree C)

Outputs: Digital RS-232 serial 9 pin D sub & USB. Removable SD card.

Dustcomm Pro Software: Windows™ driven for graphical and data translation

Power: Rechargeable and interchangeable Li-Ion battery

Operating Time: 12 hours on Li-Ion battery

Charging Time: approximately 5 hours

Operating temperature: -10°C to 50°C

Operating Humidity: 95% non-condensing

Storage Temperature: -20°C to 70°C

Dimensions: (case) 10"X 4"X 9"

Weight: 7 lbs.

Optional Sensor Inputs:

Wireless Modem: 916 MHz (US) 868 MHz (Euro)

Wind Speed Sensor: 0-125mph

Wind Direction Sensor: 5 to 355°

Wind Speed Specifications:

Wind Speed Range: 0 MPH to 90 MPH (0 m/s to 40 m/s)

Wind Speed Resolution: 0.1 MPG (0.1 m/s)

Wind Speed Accuracy (no precipitation): 32°F to 131° (0°C to 55°C)

Low Speed Winds: 0 to 11.5 MPH : 1.1 MPH + 10% of Reading (0 m/s to 5 m/s; 0.5m/s +10% of reading)

High Speed Winds: 11.5 PMH-90 MPH: 2.3 MPH or 5% whichever is greater. (5m/s to 40 m/s; 1m/s or 5%, whichever is greater)

Wind Speed Accuracy in Wet Conditions: 5.7 MPH RMS (2.5 m/s RMS)

Wind Direction Specifications:

Wind Direction Range: 0 - 360°

Wind Direction Resolution: 0.1°

Wind Accuracy (no precipitation): 32°F to 131°F (0°C to 55°C)

Low Wind Speeds: 5°RMS Typical 4.6 MPH to 11.5 MPH (2 m/s to 5 m/s)

High Winds: 2° RMS Typical >11.5MPH (>5 m/s)

Wind Direction Accuracy in Wet Conditions: 8° RMS typical >9.2 MPH (>4 m/s)

Barometric Pressure:

Barometric Pressure Range: 300mbar to 1100 mbar (24 inHg to 11 inHg, 800 hPa to 1100 hPa)

Barometric Pressure Resolution: 0.1 mbar (0.029 inHg, 0.1 hPa)

Barometric Pressure Accuracy: +/-1 mbar (+/-0.029 inHg, +/-1 hPa)

(when altitude correction is available)

GPS

Position Accuracy: 3 m (10') with WAAS/EGNOS (95% of the time, SA off) – (150WX & 200WX)

Operating Temperature: -13°F - 131°F (-25° C to 55°C)

Power

Supply Voltage: 9 VDC to 40 VDC

Supply Current: 12 VDC

Weight: 0.8 lbs. (300 grams)

Communication Interface: RS-232 or RS-422

Mounting Thread Size on Base: 1" – 14 UNS or ¾" NPT

Certification and Standards (pending)

CE, IPX6, RoHS, IEC610000-4.2, IEC60945